

200S Handrail Installation Instructions

Read all instructions completely before beginning installation!

Step 1 - Attach Stainless Steel Bases to the step using the hardware provided. If the dock step and handrail were purchased together, the holes for the bases should be predrilled. The washers and nuts for the screws are assembled from underneath the step. Do not tighten hardware completely!

See Figure 1

(If the holes for the bases are not pre-drilled, a 1/4" drill bit will be needed to drill them out. It is recommended that you assemble the handrail with the bases attached to determine the exact position needed for the base holes. Once they are drilled out, continue with instructions.)

Step 2 - Using the 1/8" Hex wrench loosen the set screws located in each base. This will allow the leg of the rail to slide in easier.

Step 3 - Insert 6" couplers into the end of each leg of the rail. Insert until flush with the leg. This adds strength to the handrail. **See Figure 2**

Step 4 - Insert Handrail into bases as shown and tighten set screws. Completely tighten all other hardware at this time. The handrail is now complete! **See Figure 3**

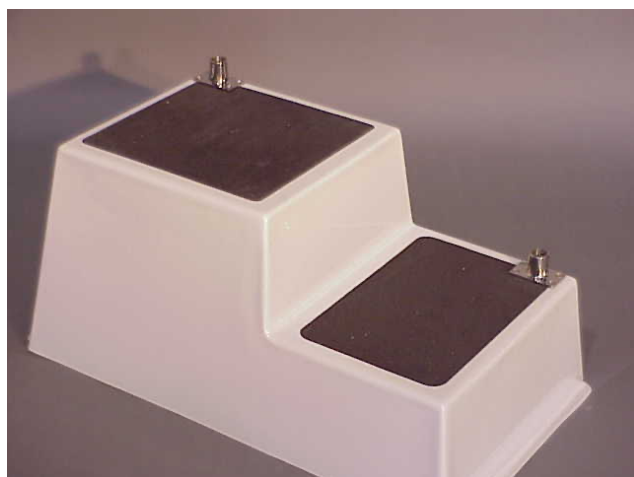


Figure 1

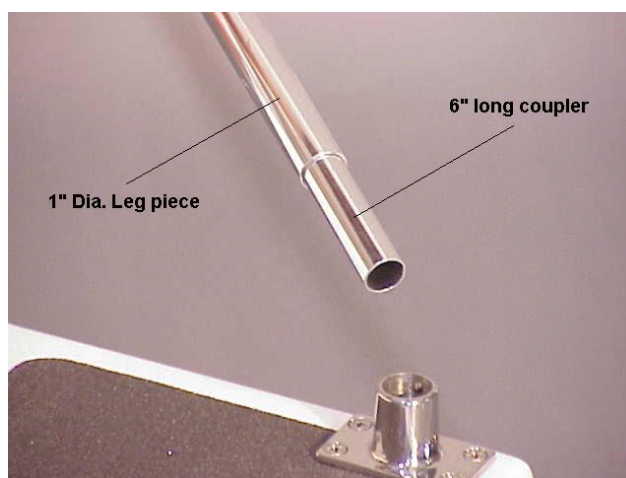


Figure 2



Figure 3